

New

For cutting melamine board

## Super Board Pro III "TDM" Type

**SUPER BOARDPRO III**

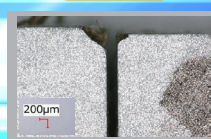
**TCT**  
Tungsten Carbide Tipped



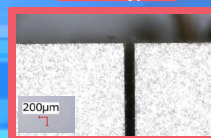
Saw blade for finish-cut, especially for the user requires a high cutting quality on melamine board by using panel saw & running saw machines.

Fine cutting edge quality

Conventional



TDM Type



### Features

1. Reducing chippings on board end.
2. Reducing waves on melamine edge
3. Reducing cutting noise

New

PCD router bit Increased shear angle

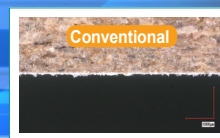
## PCD Cosmo Bit "ff" (fortissimo)



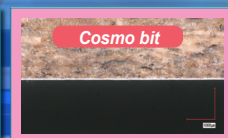
Less burning, Better swarf removal.  
Increased shear angle.

Chipping Resistance Evaluation

Conventional



Cosmo bit



### Features

1. Increased shear angle teeth achieve the excellent cutting surface
2. High rigidity body reduces vibrations
3. Double flute reduces burning

New

For cutting stainless steel moldings for automobiles.

Also applicable for cutting thin steel plates, steel pipes, stainless materials and composite materials up to 1mm.

## Mold Pro II



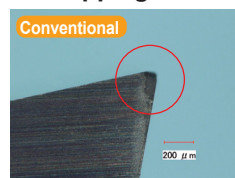
20% longer blade life than conventional models because the "MOLD PRO II" vibrates less during the cutting of thin materials. Optimized slits improve saw plate rigidity and minimize deformations and burrs on the cutting material. Even during slant cutting, a stable cut is achieved.

### Features

1. Tougher tips means improved chipping resistance
2. A stable cut is achieved

Chipping Resistance Evaluation

Conventional



MOLD PRO II

